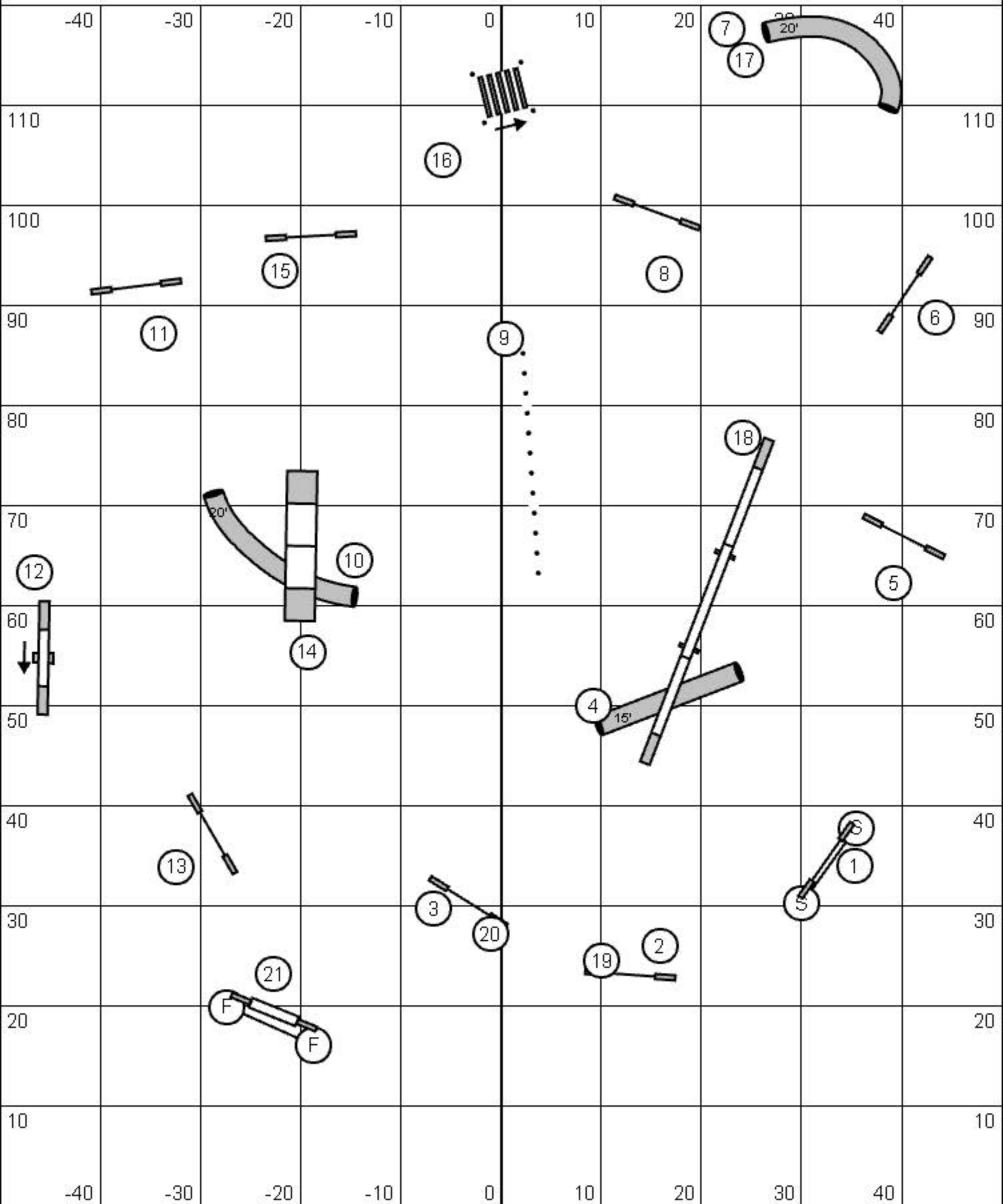


# AAC NATIONAL AGILITY CHAMPIONSHIPS STANDARD

Designing Judge: Susan Miller

Judged by: \_\_\_\_\_



(Estimated 20" path: 220yds)

ACTUAL: ( \_\_\_\_\_ ' + 36' + 18' + 12' ) / 3 = \_\_\_\_\_ yds

**Open Reg/Spec** ( 3.1 yps ) = \_\_\_\_\_ s  
24"/20"R & 20"/16"S

**Open Vet/JH** (Open + 20%) = \_\_\_\_\_ s  
20"/16" SDV & 16"/12" DDV

**Medium Reg/Spec** ( 2.9 yps ) = \_\_\_\_\_ s |

**Medium Vet/JH** (Medium + 20%) = \_\_\_\_\_ s  
12"/8" SDV & 8"/4" DDV

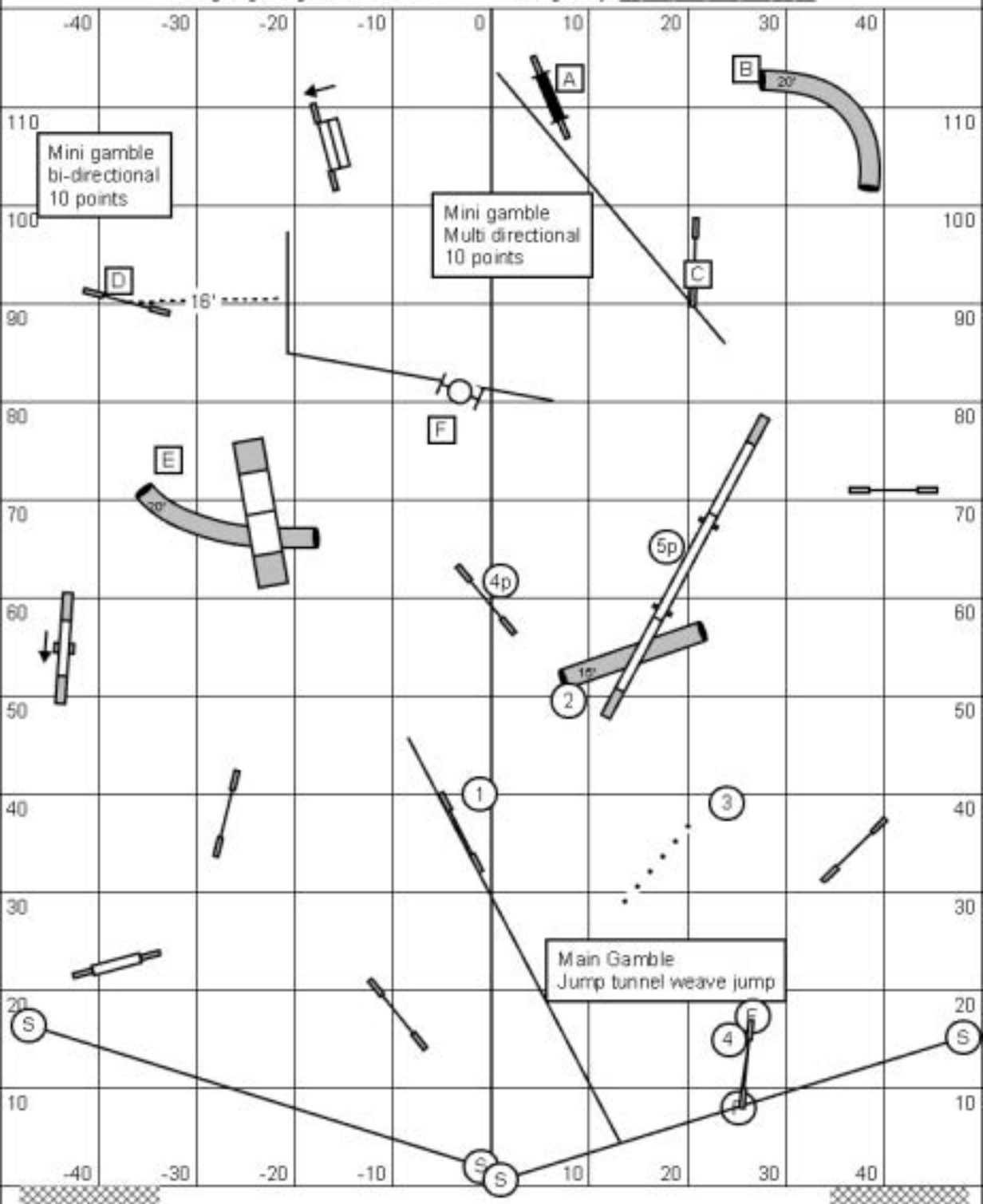
**Mini Reg/Spec** ( \_\_\_\_\_ + 5s ) = \_\_\_\_\_ s |

**Mini Vet/JH** (Mini + 20%) = \_\_\_\_\_ s  
4" SDV

NATIONAL CHAMPIONSHIPS - GAMBLERS  
CHAMPIONNAT NATIONAL - ENJEU

Designing Judge: Susan Miller

Judged by: \_\_\_\_\_



Opening 40 sec

OPENING SCT: 40 sec

Open Reg/Spec GT: 18 s  
24'20"R & 20'18"S

Open Vet GT (Open + 20%): 22 s  
20'18" SDV & 16'12" DDV

Medium Reg/Spec GT (Open + 10%): 20 s  
16'12"R & 12'18"S

Medium Vet GT (Med + 20%): 24 s  
12'18" SDV & 8'14" DDV

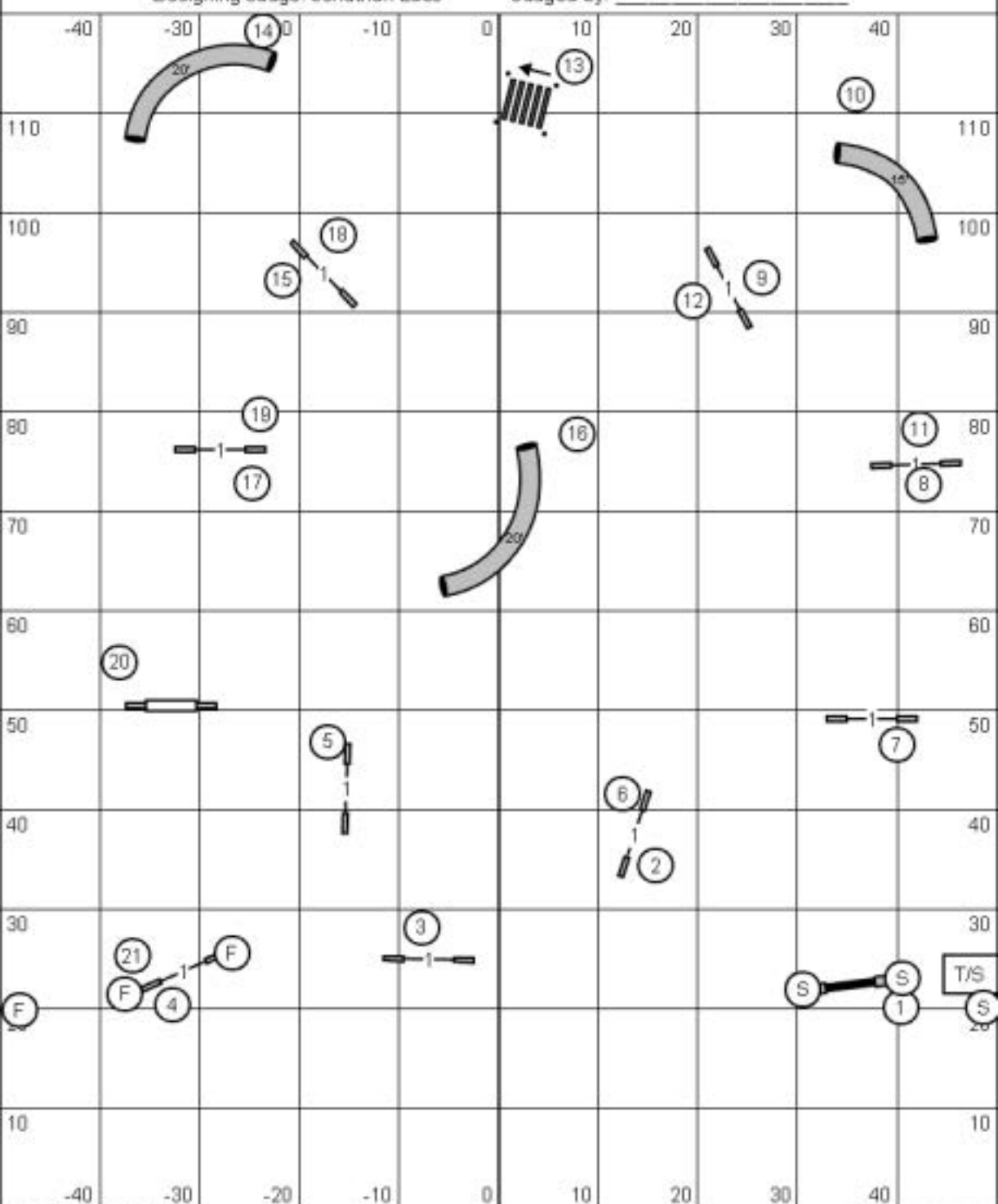
Mini Reg/Spec GT (Open + 20%): 22 s  
8'R & 4"S

Mini Vet GT (Mini + 20%): 26 s  
4" SDV

# AAC NATIONAL AGILITY CHAMPIONSHIPS JUMPERS - SAUTEUR

Designing Judge: Jonathan Luce

Judged by: \_\_\_\_\_



N/OUT

N/OUT

(Estimated 20" path: 196yds)

Open YPS: 3.9 - 4.3 / Medium YPS: 3.5 - 3.9

Actual: \_\_\_\_\_ ' / 3 = \_\_\_\_\_ yds

**Open Reg/Spec** (4.1 yps) = \_\_\_\_\_ s  
 24"/20" R & 20"/16" S

**Open Vet** (Open + 20%) = \_\_\_\_\_ s  
 20"/16" SDV & 16"/12" DDV

**Medium Reg/Spec** (3.9 yps) = \_\_\_\_\_ s  
 16"/12" R & 12"/8" S

**Medium Vet** (Medium + 20%) = \_\_\_\_\_ s  
 12"/8" SDV & 8"/4" DDV

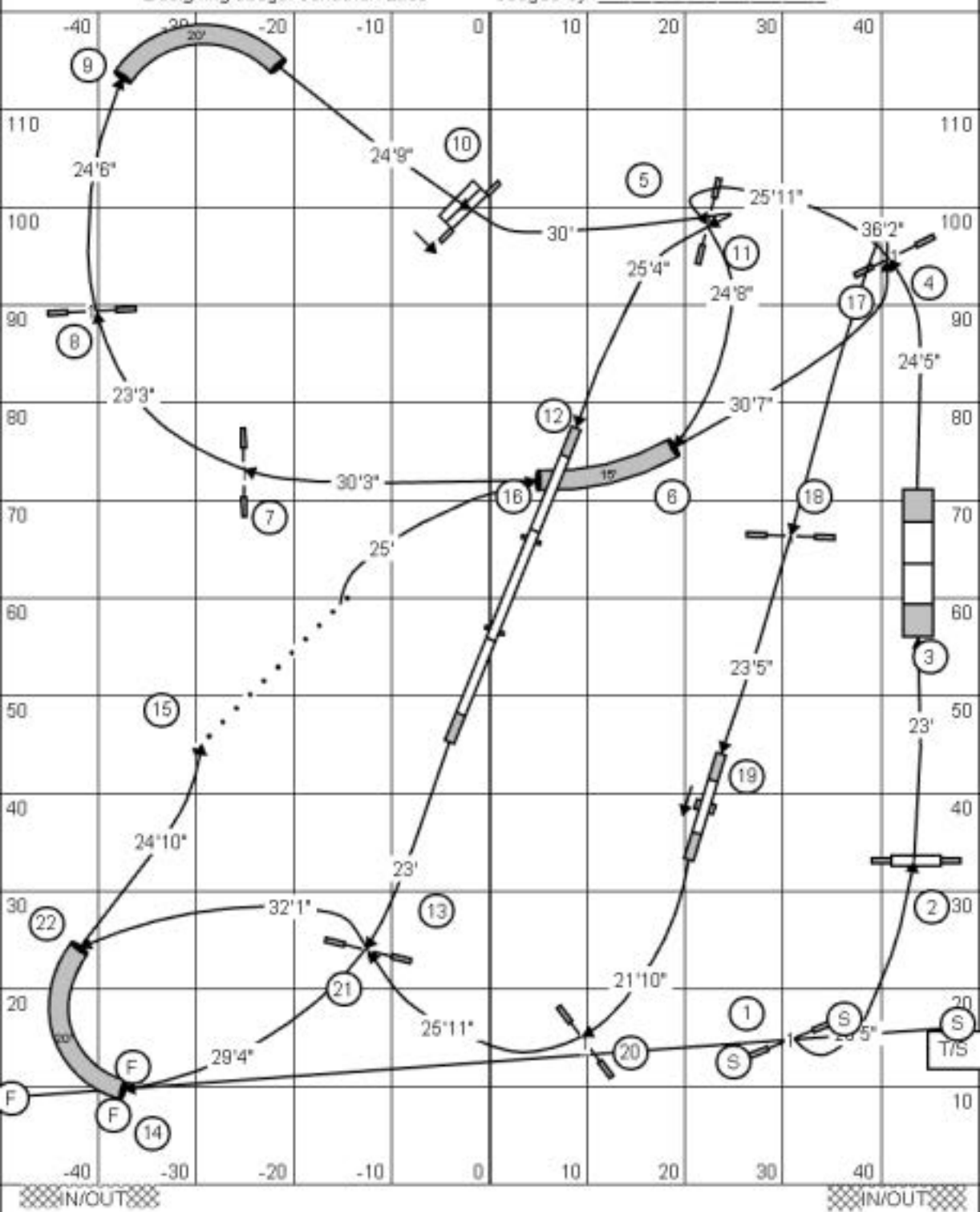
**Mini Reg/Spec** (\_\_\_\_ yps + 5s) = \_\_\_\_\_ s  
 6" R & 4" S

**Mini Vet** (Mini + 20%) = \_\_\_\_\_ s  
 4" SDV

# AAC NATIONAL AGILITY CHAMPIONSHIPS STANDARD

Designing Judge: Jonathan Luce

Judged by: \_\_\_\_\_



(Estimated 20" path: \_\_236\_\_ yds)

Open: 3.0 - 3.3 yps / Medium: 2.8 - 3.0 yps

ACTUAL: ( \_\_\_\_\_ ' + 36' + 18' + 12' ) / 3 = \_\_\_\_\_ yds

**Open Reg/Spec** (3.1 yps) = \_\_\_\_\_ s |  
24'/20" R & 20'/16" S

**Open Vet/JH** (Open + 20%) = \_\_\_\_\_ s  
20'/16" SDV & 16'/12" DDV

**Medium Reg/Spec** (2.9 yps) = \_\_\_\_\_ s |  
16'/12" R & 12'/8" S

**Medium Vet/JH** (Medium + 20%) = \_\_\_\_\_ s  
12'/8" SDV & 8'/4" DDV

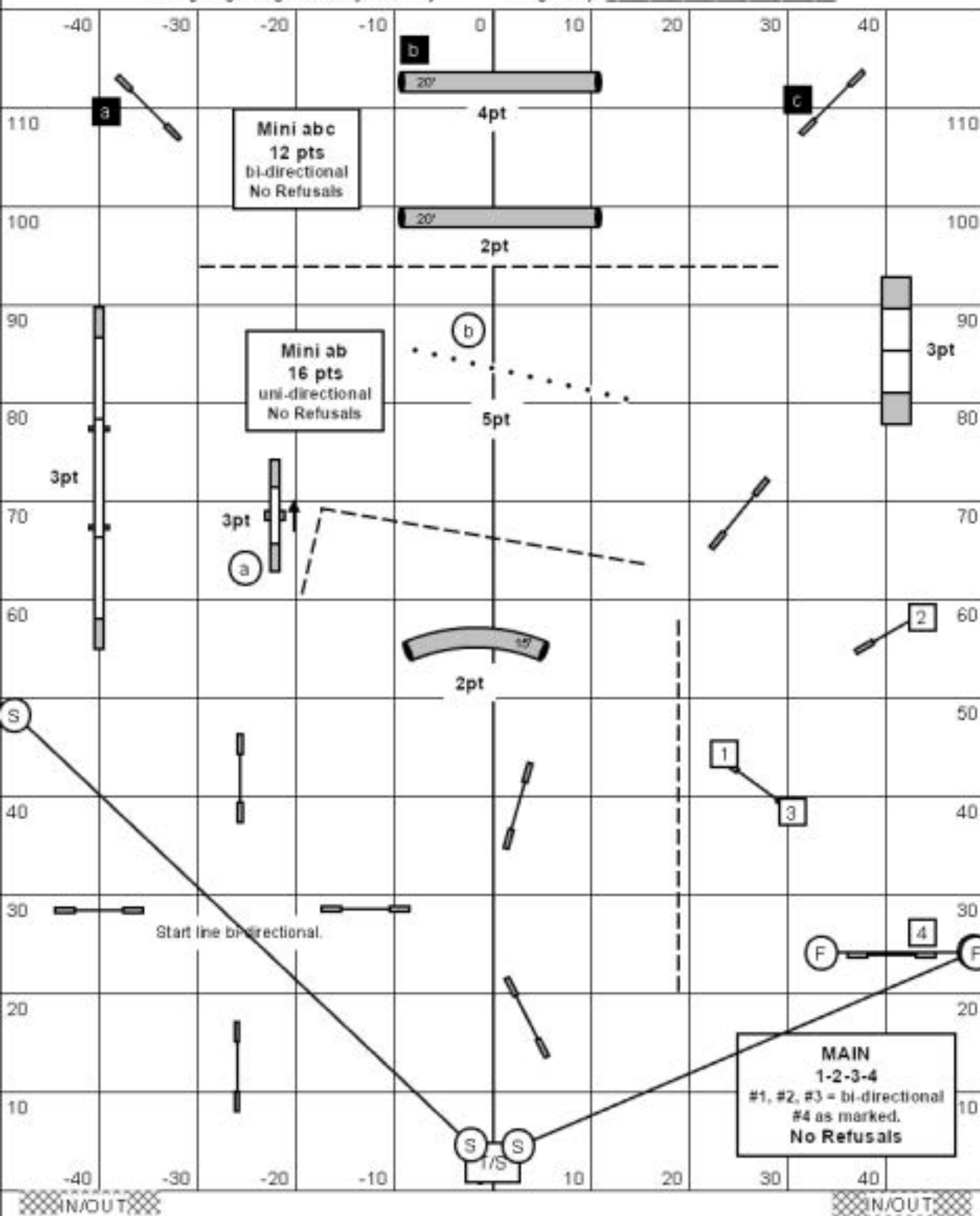
**Mini Reg/Spec** ( \_\_\_\_\_ + 5s ) = \_\_\_\_\_ s |  
8" R & 4" S

**Mini Vet/JH** (Mini + 20%) = \_\_\_\_\_ s  
4" SDV

# AAC NATIONAL AGILITY CHAMPIONSHIPS GAMBLERS - ENJEU

Designing Judge: **Cindy Swiney**

Judged by: \_\_\_\_\_



**OPENING SCT: 40 sec**

**Open Reg/Spec GT : 18 s**  
24"/20"R & 20"/16"S

**Open Vet GT (Open + 20%): 22 s**  
20"/16" SDV & 16"/12" DDV

**Medium Reg/Spec GT (Open + 10%): 20 s**  
16"/12"R & 12"/8"S

**Medium Vet GT (Med + 20%): 24 s**  
12"/8" SDV & 8"/4" DDV

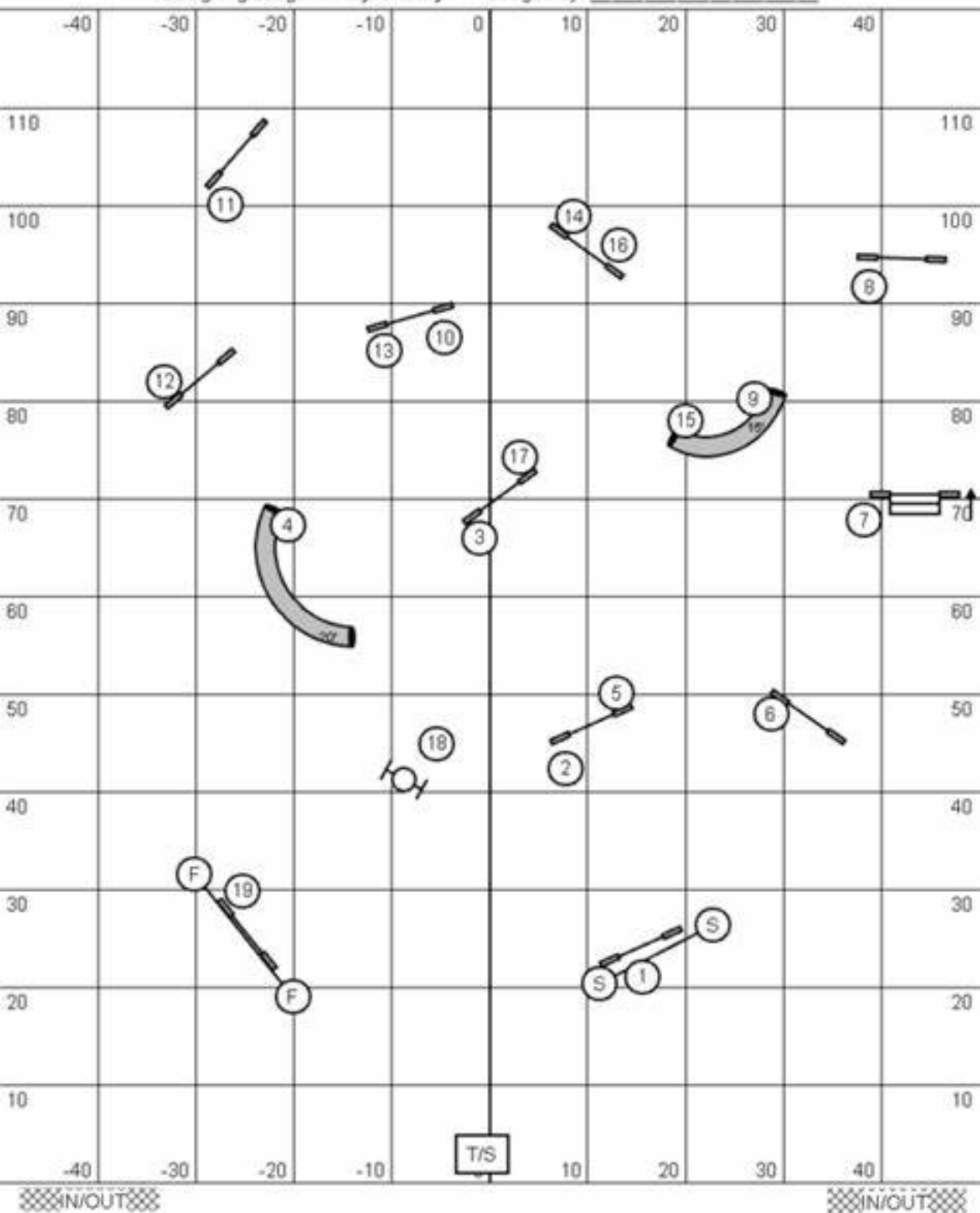
**Mini Reg/Spec GT (Open + 20%): 22 s**  
8"R & 4"S

**Mini Vet GT (Mini + 20%): 26 s**  
4" SDV

REGIONAL CHAMPIONSHIPS - JUMPERS  
CHAMPIONNAT PROVINCIAL - SAUTEUR

Designing Judge: **Cindy Swiney**

Judged by: \_\_\_\_\_



(Estimated 20" path: 165 - 170 yds)

Open YPS: 3.9 - 4.3 / Medium YPS: 3.5 - 3.9

Actual: \_\_\_\_\_' / 3 = \_\_\_\_\_ yds

**Open Reg/Spec** ( 4.15 yps ) = \_\_\_\_\_ s  
24"/20" R & 20"/16" S

**Open Vet** (Open + 20%) = \_\_\_\_\_ s  
20"/16" SDV & 16"/12" DDV

**Medium Reg/Spec** ( 3.75 yps ) = \_\_\_\_\_ s  
16"/12" R & 12"/8" S

**Medium Vet** (Medium + 20%) = \_\_\_\_\_ s  
12"/8" SDV & 8"/4" DDV

**Mini Reg/Spec** ( 3.75 yps + 5s ) = \_\_\_\_\_ s  
8" R & 4" S

**Mini Vet** (Mini + 20%) = \_\_\_\_\_ s  
4" SDV