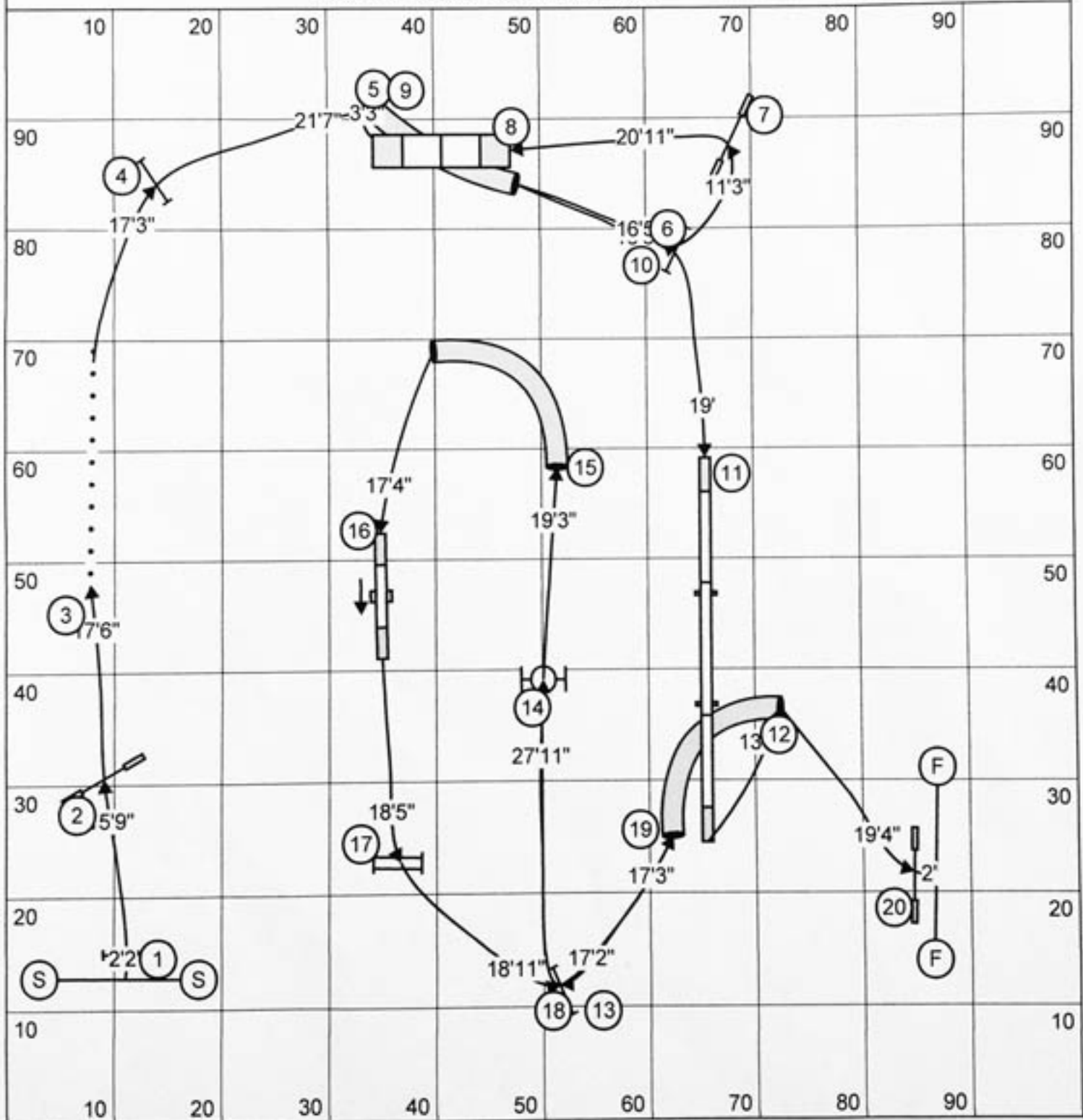
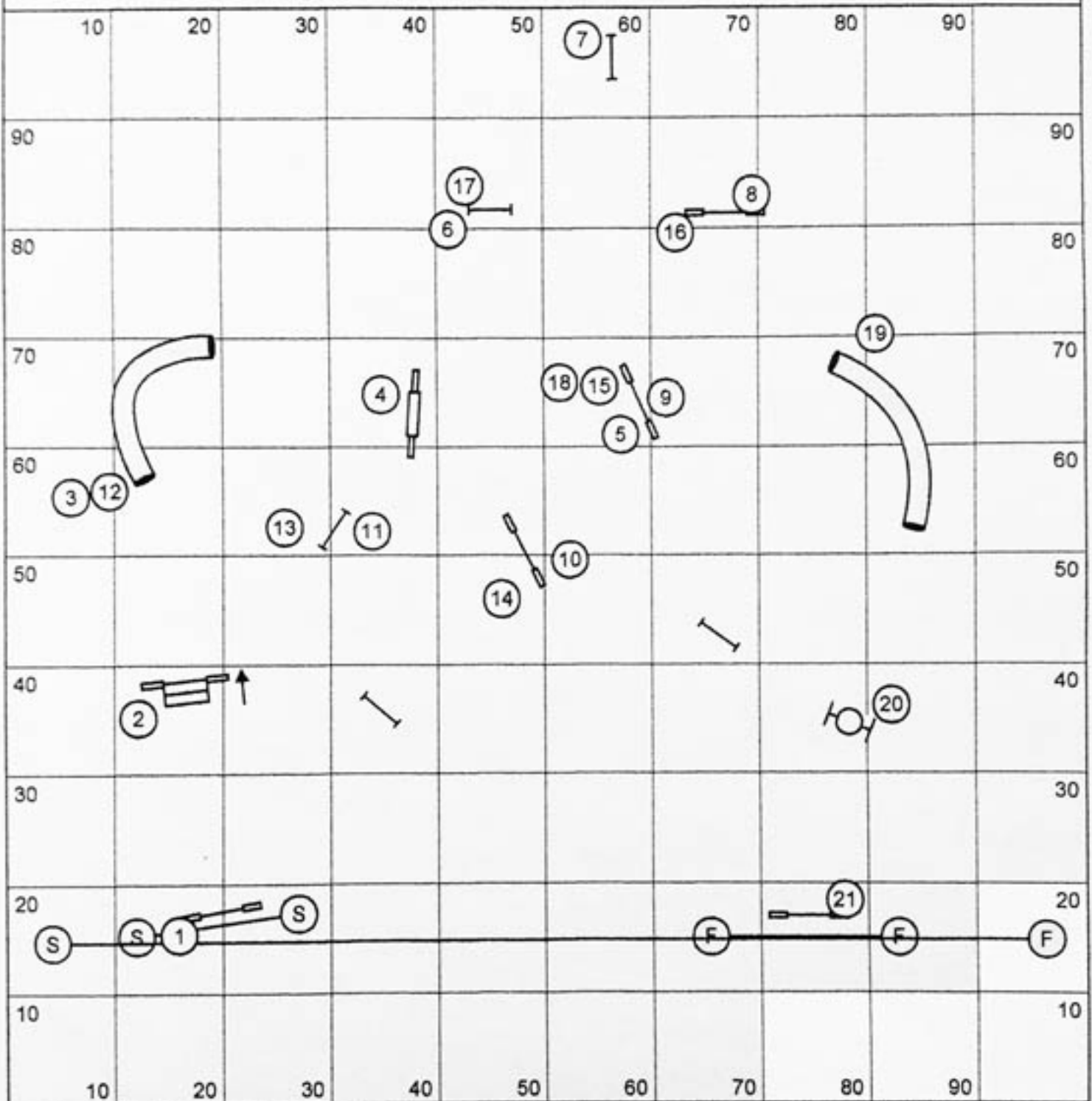


Regional Standard - 101  
 Deborah Rhodes  
 Est YPS = Open = 3.15; Mini = 3.00

Yards = 190  
 Open: 60 Vet: 72  
 Mini: 63 Vet: 76



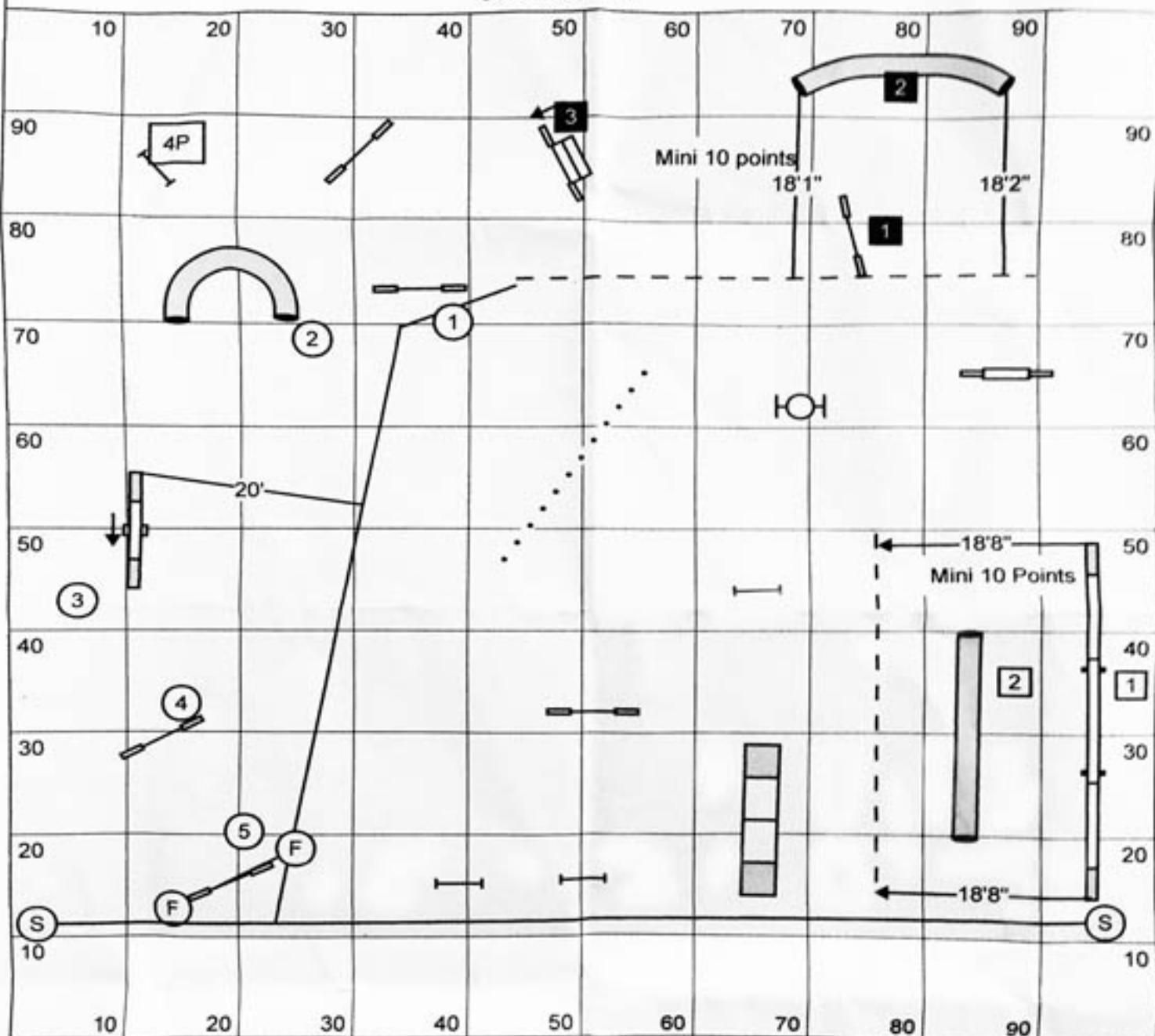
Designing Judge - JL ELLIOT - REGIONAL JUMPERS 101



YRDS: \_\_\_\_\_ Open 4.1 \_\_\_\_\_ Mini 3.8 \_\_\_\_\_

Max \_\_\_\_\_ Open Vet \_\_\_\_\_ Mini Vet \_\_\_\_\_

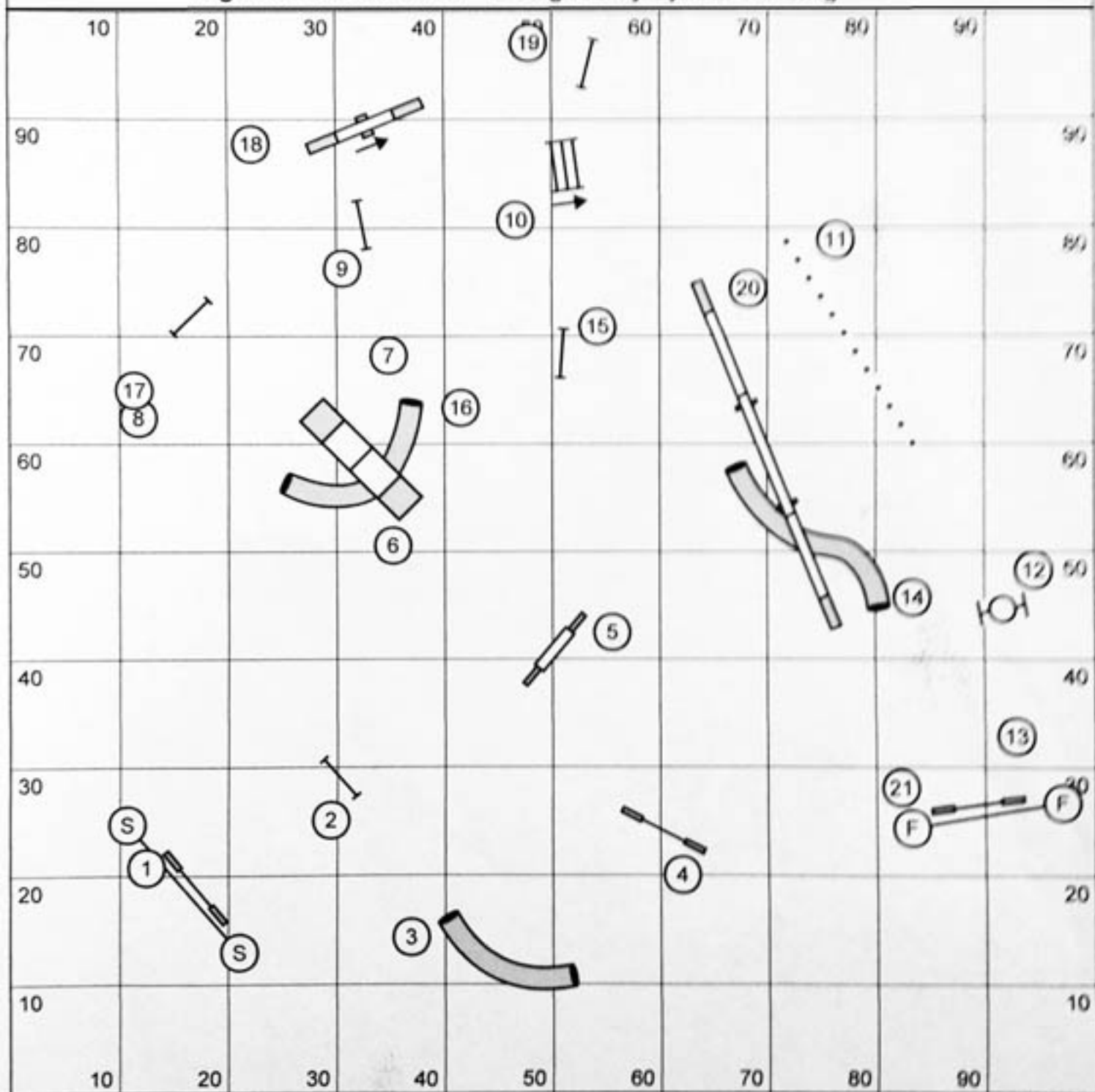
Gamblers - 101



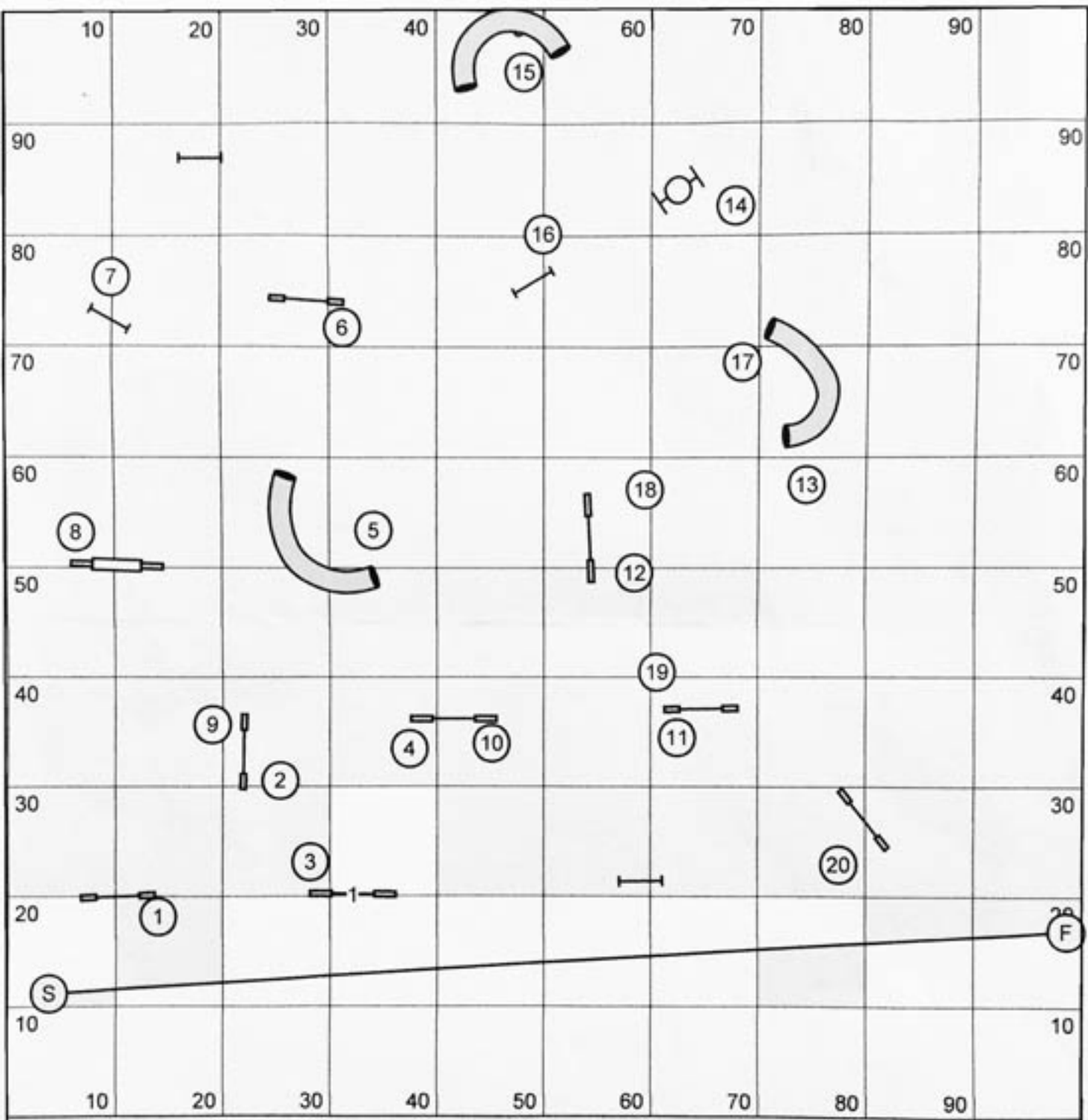
Designing Judge - Trish Levesque  
 Regional Gamblers  
 Opening Sequence 40 Sec  
 Final Gamble: Mini: 22sec  
 Open 20 sec  
 Vet Mini: 26 sec  
 Vet Open: 24 sec

Both mini gambles  
 Obstacles can be done  
 in any order or direction  
 but spread must be taken  
 in proper direction

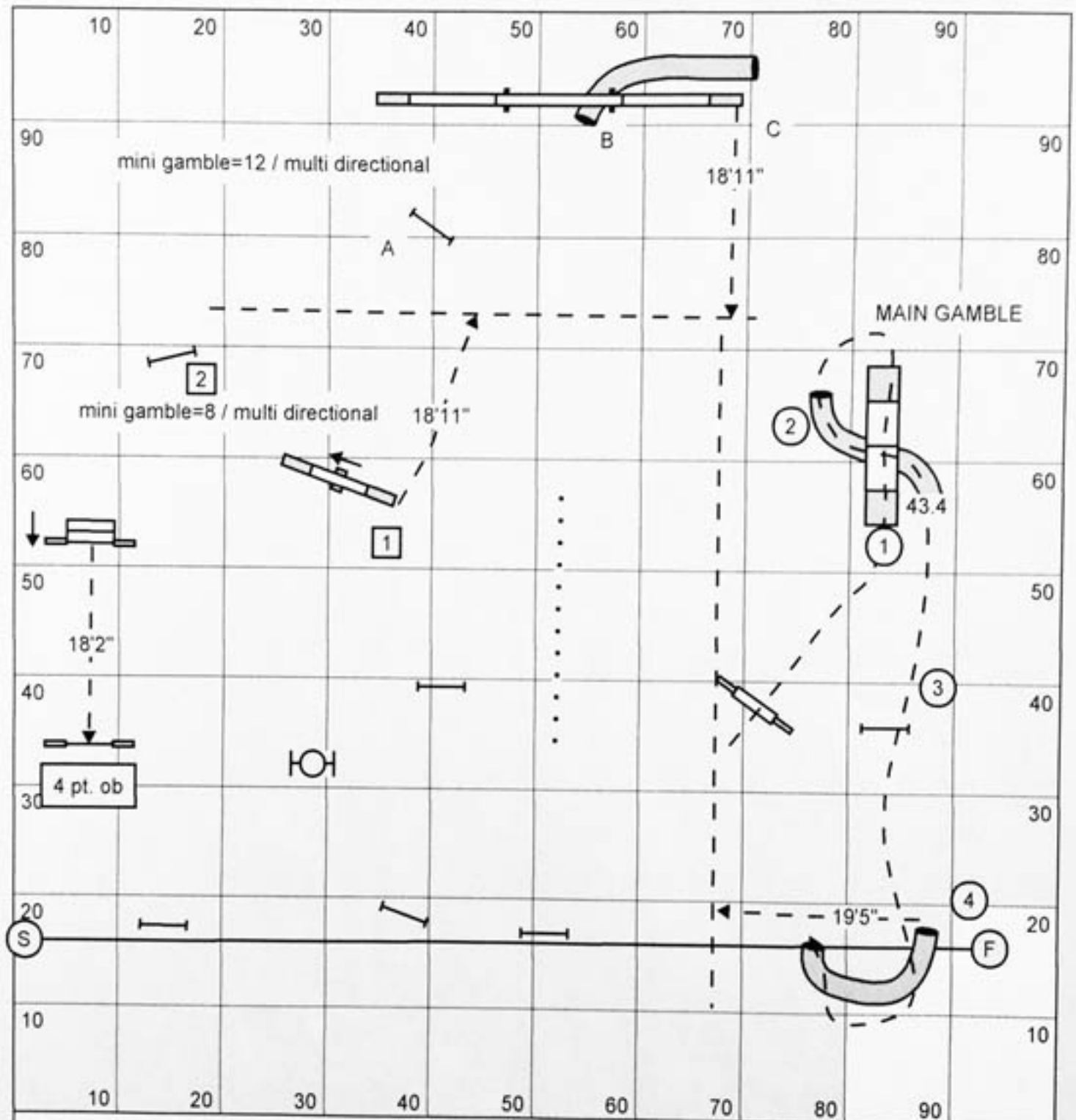
# Regional Standard 101 Designed by Lynda Yielding



Course Length: 203 yds  
 Op/Sp: yds @ 3.1 yps = 65 secs    Op Vets: 3.72 x 1.2 = 78<sup>cc</sup> secs  
 Mini/Sp: yds @ 2.95 yps = 69 secs    Mini Vets: 3.54 x 1.2 = 83 secs



AAC Regional Championship 2013, Jumpers 101  
 Y 183 O. 4.15 yps 44 M. 3.95 yps 46  
 OV. x 20% 53 4.48 MV. x 20% 55  
 Designed by: France Beckner 4.74



Darr Housen - REGIONALS Gamblers

OPENING: 40 SECONDS    CLOSING: OPEN: 18 SECONDS    MINI: 20 SECONDS  
 OPEN VETS: 22 SEC.    MINI VETS: 24 SEC